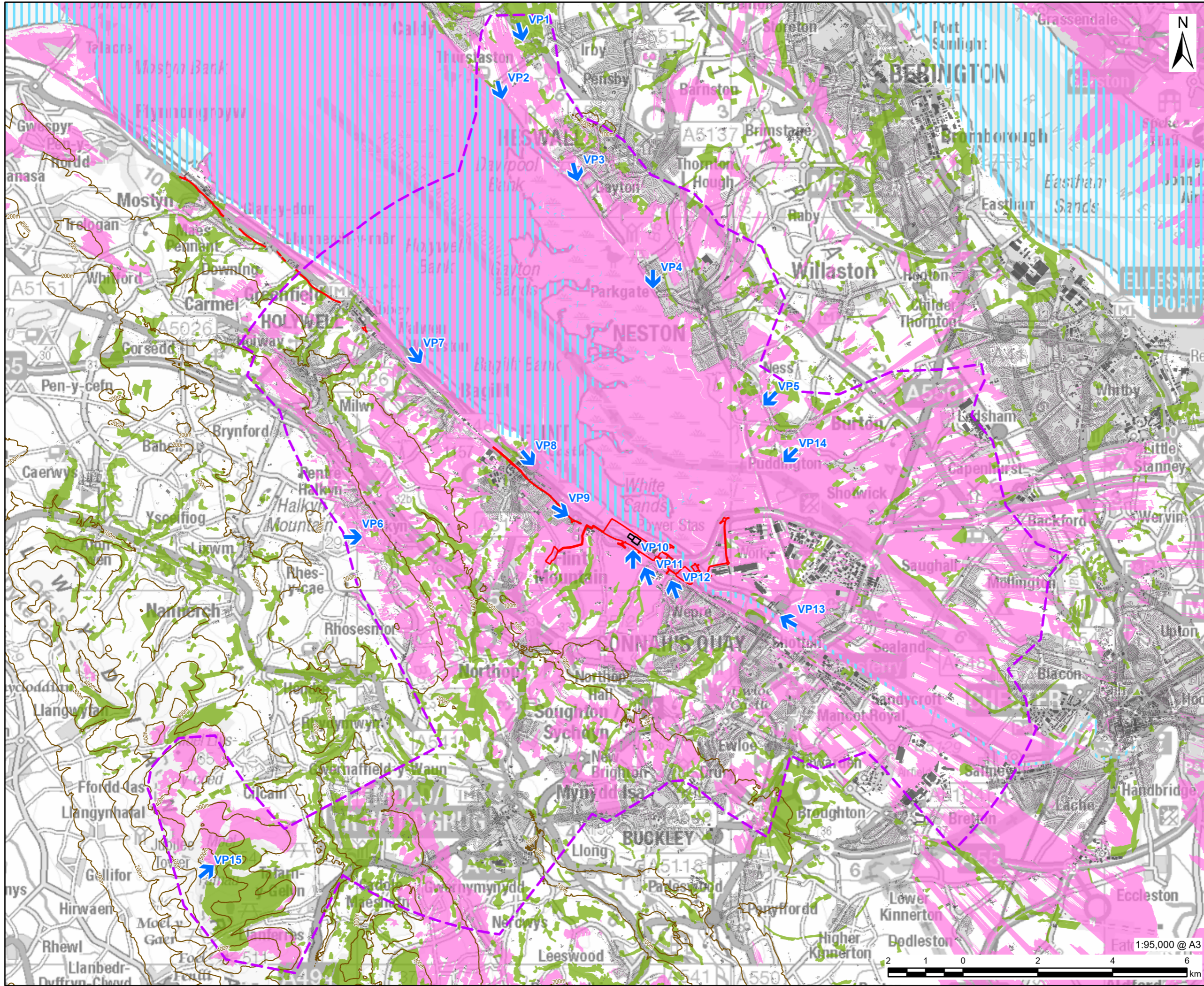


Connah's Quay Low Carbon Power

Environmental Statement Volume III Figure 15-8: Zone of Theoretical Visibility - 145 m CCP Absorber Column (including Stack) Height plus 7.4 m Raised Ground Level

Planning Inspectorate Reference: EN010166
Document Reference: EN010166/APP/6.3
Planning Act 2008 (as amended)
Infrastructure Planning (Applications: Prescribed Forms and Procedure) Regulations
2009 - Regulation 5(2)(a)
Revision 02

March 2026



PROJECT
 Connah's Quay Low Carbon Power

CONSULTANT
 AECOM Limited
 The Colmore Building
 Colmore Circus, Queensway
 Birmingham, B4 6AT
 www.aecom.com

- LEGEND**
- Order limits
 - Study Area
 - Indicative CCP Absorber Column (Including Stack) Location
 - ➔ Viewpoint Location
 - 100m Contour
 - Tidal Waterbody
 - Existing Building - Assumed Height of 8m
 - Woodland (National Forest Inventory) - Assumed Height of 12m
 - Zone of Theoretical Visibility - 145m CCP Absorber Column (Including Stack) Height plus 7.4m Raised Ground Level (152.4m AOD)

NOTES

© Crown Copyright 2025. All rights reserved. Ordnance Survey Licence AC0000808122. Contains OS data © Crown copyright 2025, 2024. Contains, or is based on, information supplied by the Forestry Commission. © Crown copyright and database right 2019 Ordnance Survey (100021242).

Zone of Theoretical Visibility (ZTV) has been generated using Ordnance Survey (OS) Terrain 5 Digital Terrain Model (DTM) which does not take into account the screening effect of vegetation, buildings, or other structures. Existing buildings have been incorporated into the DTM from OS Vector Map Local with an assumed height of 8m. Woodland has been incorporated into the DTM from the National Forest Inventory (NFI) with an assumed height of 12m. The ZTV is based upon a grid of points at 50m intervals within the Indicative CCP Absorber Column (Including Stack) Location with an assumed height of 145m on a 7.4m (AOD) raised platform, with an observer eye height of 1.6m. All heights mentioned are above ground level (AGL) unless otherwise specified.

ISSUE PURPOSE
 Environmental Statement

DATE
 March 2026

PROJECT NUMBER
 60768754

FIGURE TITLE
 Zone of Theoretical Visibility - 145 m CCP Absorber Column (Including Stack) Height plus 7.4 m Raised Ground Level

FIGURE NUMBER
 Figure 15-8

This drawing has been prepared for the use of AECOM's client. It may not be used, modified, reproduced or relied upon by third parties, except as agreed by AECOM or as required by law. AECOM accepts no responsibility, and denies any liability whatsoever, to any party that uses or relies on this drawing without AECOM's express written consent. Do not scale this document. All measurements must be obtained from the stated dimensions.